



PEW Electrical Distributors

TFT Displays



IRIS 7.0"

High resolution car position indicator



Dimensions: 7.0"
Visible area: 154.1 x 86mm.
Resolution: 800(RGB) x 480 -WVGA
Pixel (mm): 0.1926x0.1179mm
Colours: 16m
Energy consumption: 360mA
Power supply: 12/24 Vdc
Temperature range: -5/+40°C
Encumbrance: 178x166x22mm

MAIN FEATURES

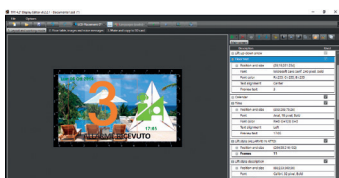
- Easy layout configuration via SIRIO PC software
- Customisable background, arrows, floors, logo and signalling
- Meets EN 81-70
- Energy saving system mode (stand-by)
- Easy joystick for the onboard selection of main features (buzzer volume, communication interface, first floor, brightness, stand-by duration)
- Communication interface: Vega serial, RS485 Encoder, CAN, parallel and magnetic sensors
- Enclosure: plastic protection case
- Mounting: horizontal and vertical
- Voice synthesizer on board
- Updating by USB/SD card
- Compact design: 178mm x 166mm x 20mm
- Direct connection to Standalone Reed Switches & Magnet System - no encoder needed
- OPTION: **EN81-71 Antivandal Version CAT 2, 10mm Glass with Steel frame**



Example layouts / graphics



7.0" with AV Frame and Lens



SIRIO SOFTWARE

- Intuitive dedicated programming software
- Easily customise your TFT layout
- Inbuilt fonts and arrow design options
- Change display orientation
- Export to microSD Card for display update

ORDER CODES

TFT751A-2: 7.0" TFT, for 2mm plate, parallel input (standalone) and VEGA Serial
TFT753A-2: 7.0" TFT, for 2mm plate, parallel input and SNV201ENC-VG (binary, gray, 1PF)

add AV to above: Antivandal EN81-71 Category 2, for 2mm plate

SNV201ENC-VG: VEGA Encoder with Speech for Binary, Gray, 1PF

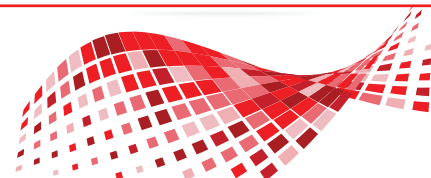
SNV201/1WSPK: 1Watt Speaker (for speech)
SNV201/5WSPK: 5Watt Speaker (for speech)

PEW Electrical Distributors Ltd

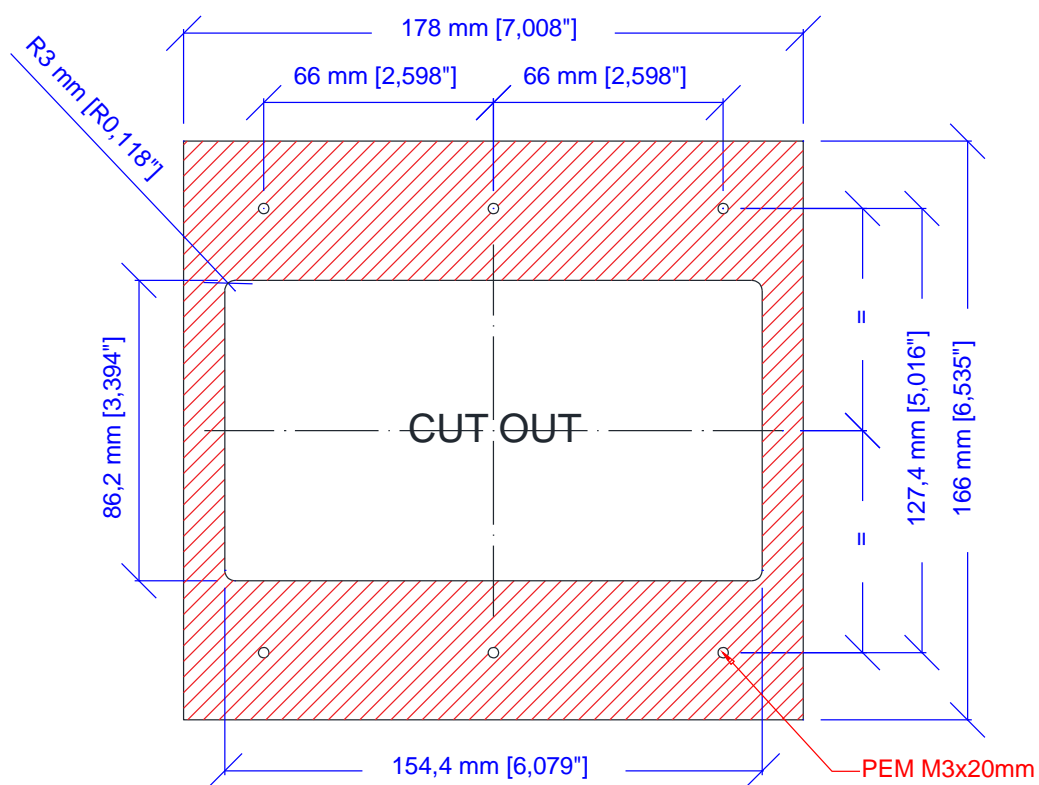
Unit 1 The iO Centre
59-71 River Road
Barking, Essex IG11 0DR

0208 507 1001

sales@pewelectrical.com
www.pewelectrical.com



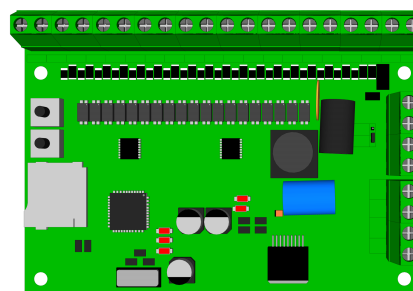
DIMENSIONS



INTERFACES

SNV201:ENC

- RS485 serial encoder board (4-wire) to car & landings
- Binary, Gray, 1 per Floor inputs
- Maximum 32 stops
- Default or configurable service message inputs
- Configure set-up onboard via buttons
- Speech output with COP mounted speaker (1W or 5W)
- Update speech using .wav files to MicroSD Card



1 PER FLOOR

- Direct input to display
- Maximum 10 stops

PARALLEL INPUT

- Common Positive (Anode)
- Common Negative (Cathode)